

# Everyday Events

## Deluxe Sandwich Christmas Lunch



Price Per Person \$12.95 + tax

A finger-friendly lunchtime menu to reflect the scrumptious tastes of the season! Serve this at a meeting, afternoon Christmas party, or even a school function.

*This menu includes all of the below:*

### Cold



#### **Fresh Cut Vegetable Platter**

Served with ranch or creamy dill dip.



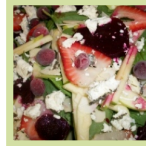
#### **Fresh Seasonal Fruit Platter**

Selection of seasonal sliced fruit.



#### **Very Merry Sandwich Assortment**

50% assortment will be Traditional Turkey Sandwich with Cranberry Sauce. 50% assortment will be Assorted Sandwiches and Wraps: Roast Beef, Egg, Tuna, Ham and Vegetarian.



#### **Festive Berry Spinach Salad**

Fresh berries on a bed of spinach topped with slivered almonds and our poppyseed dressing.



#### **Dessert Platter**

A fine selection of cakes and squares



#### **Assorted Beverages**

A variety of individual juice, pop and water.

### Additional Information

### The Price Per Person Includes

Includes: Takeout plates, cutlery and paper napkins.